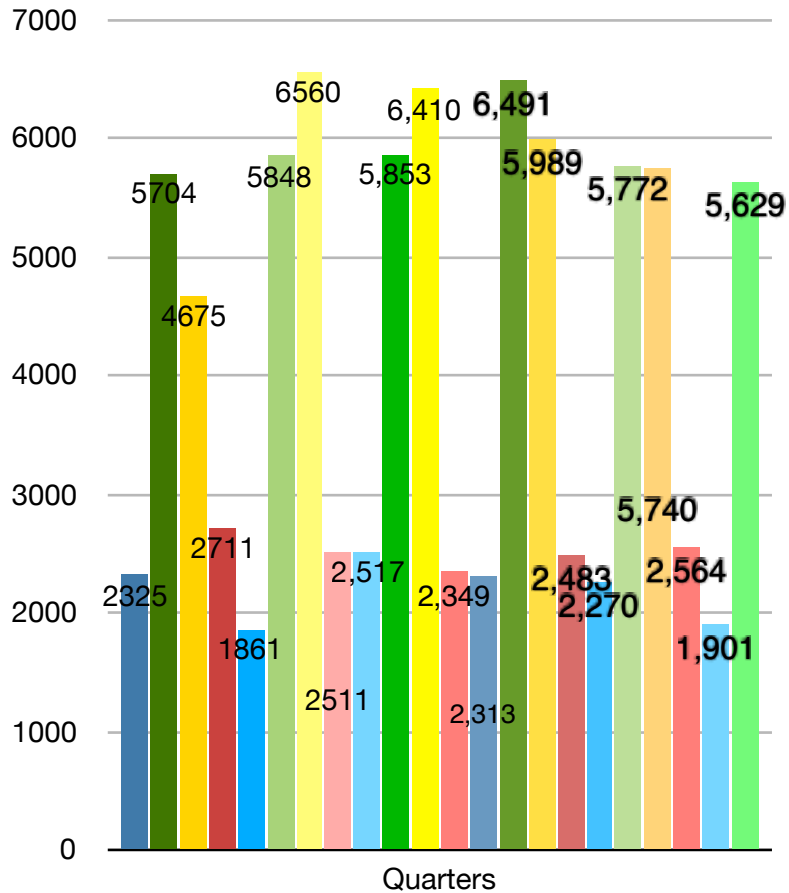


# SSCE PV Generation to 15 Mar 2017

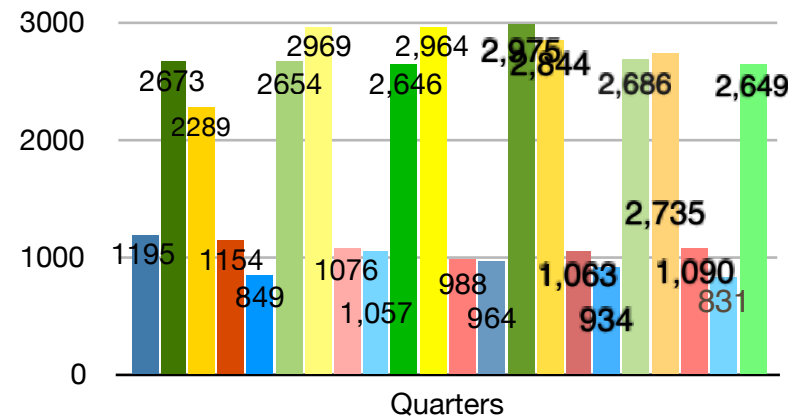
## Electricity Generation (kWh): St Giles Hospice



- Q1 Dec 11 - Mar 12
- Q2 Mar 12 - Jun 12
- Q3 Jun 12 - Sept 12
- Q4 Sept 12 - Dec 12
- Q5 Dec 12 - Mar 13
- Q6 Mar 13 - Jun 13
- Q7 Jun 13 - Sept 13
- Q8 Sept 13 - Dec 13
- Q9 Dec 13 - Mar 14
- Q10 Mar 14 - Jun 14
- Q11 Jun 14 - Sept 14
- Q12 Sept 14 - Dec 14
- Q13 Dec 14 - Mar 15
- Q14 Mar 15 - Jun 15
- Q15 Jun 15 - Sept 15
- Q16 Sept 15 - Dec 15
- Q17 Dec 15 - Mar 16
- Q18 Mar 16 - Jun 16
- Q19 Jun 16 - Sept 16
- Q20 Sept 16 - Dec 16
- Q21 Dec 16 - Mar 17
- Q22 Mar 17 - Jun 17

|                                 | SAP predicted kWh p.a. | Year 1 kWh produced | Year 2 kWh produced | Year 3 kWh produced | Year 4 kWh produced | Year 5 kWh produced |
|---------------------------------|------------------------|---------------------|---------------------|---------------------|---------------------|---------------------|
| <b>St Giles Hospice</b>         | 15117                  | 15415               | 16780               | 17129               | 17276               | 16346               |
| <b>Whittington Village Hall</b> | 6614                   | 7311                | 7548                | 7655                | 7846                | 7445                |

## Electricity generation (kWh): Whittington Village Hall



- Q3 Jun 12 - Sept 12
- Q4 Sept 12 - Dec 12
- Q7 Jun 13 - Sept 13
- Q8 Sept 13 - Dec 13
- Q11 Jun 14 - Sept 14
- Q12 Sept 14 - Dec 14
- Q15 Jun 15 - Sept 15
- Q16 Sept 15 - Dec 15
- Q19 Jun 16 - Sept 16
- Q20 Sept 16 - Dec 16