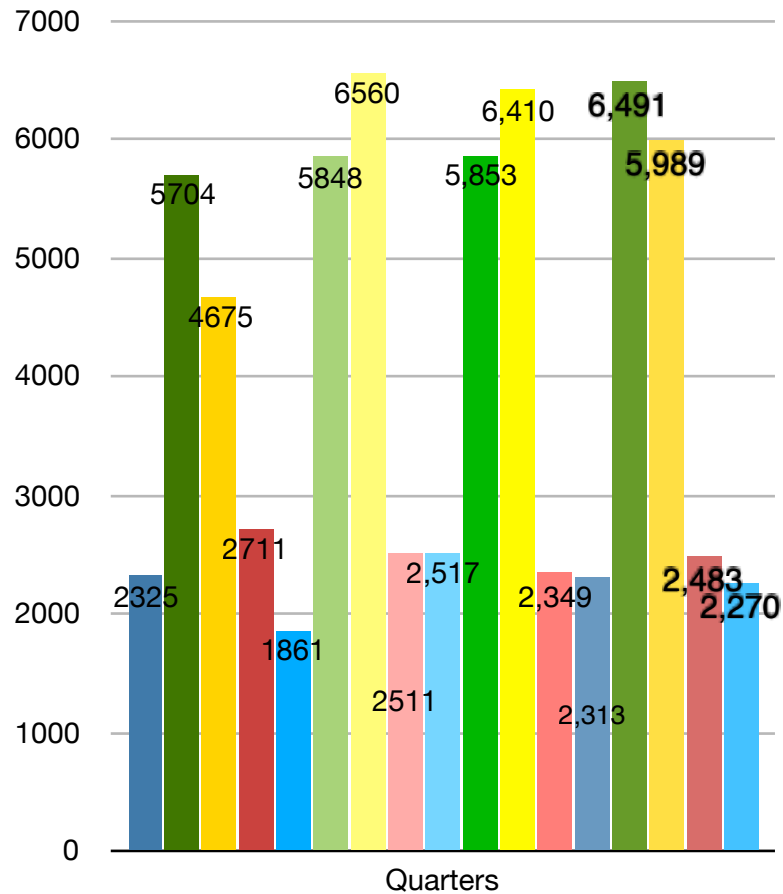


SSCE PV Generation to 15 March 2016

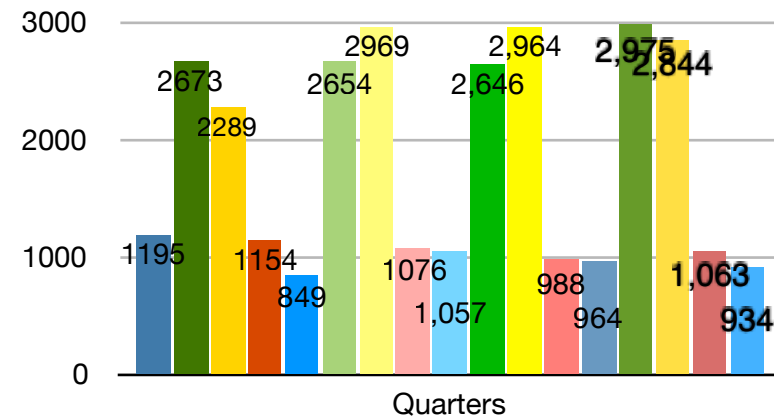
Electricity Generation (kWh): St Giles Hospice



- Q1 Dec 11 - Mar 12
- Q2 Mar 12 - Jun 12
- Q3 Jun 12 - Sept 12
- Q4 Sept 12 - Dec 12
- Q5 Dec 12 - Mar 13
- Q6 Mar 13 - Jun 13
- Q7 Jun 13 - Sept 13
- Q8 Sept 13 - Dec 13
- Q9 Dec 13 - Mar 14
- Q10 Mar 14 - Jun 14
- Q11 Jun 14 - Sept 14
- Q12 Sept 14 - Dec 14
- Q13 Dec 14 - Mar 15
- Q14 Mar 15 - Jun 15
- Q15 Jun 15 - Sept 15
- Q16 Sept 15 - Dec 15
- Q17 Dec 15 - Mar 16

	SAP predicted kWh p.a.	Year 1 kWh produced	Year 2 kWh produced	Year 3 kWh produced	Year 4 kWh produced
St Giles Hospice	15117	15415	16780	17129	17276
Whittington Village Hall	6614	7311	7548	7655	7846

Electricity generation (kWh): Whittington Village Hall



- Q1 Dec 11 - Mar 12
- Q2 Mar 12 - Jun 12
- Q3 Jun 12 - Sept 12
- Q4 Sept 12 - Dec 12
- Q5 Dec 12 - Mar 13
- Q6 Mar 13 - Jun 13
- Q7 Jun 13 - Sept 13
- Q8 Sept 13 - Dec 13
- Q9 Dec 13 - Mar 14
- Q10 Mar 14 - Jun 14
- Q11 Jun 14 - Sept 14
- Q12 Sept 14 - Dec 14
- Q13 Dec 14 - Mar 15
- Q14 Mar 15 - Jun 15
- Q15 Jun 15 - Sept 15
- Q16 Sept 15 - Dec 15